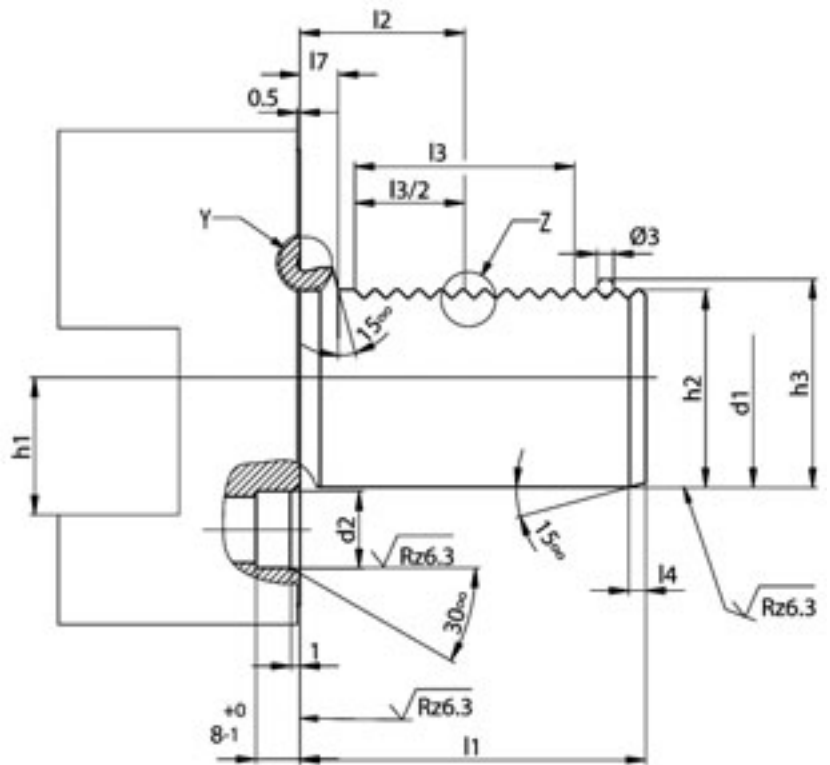
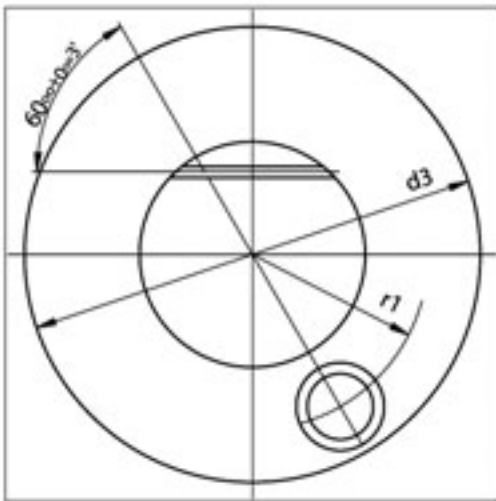
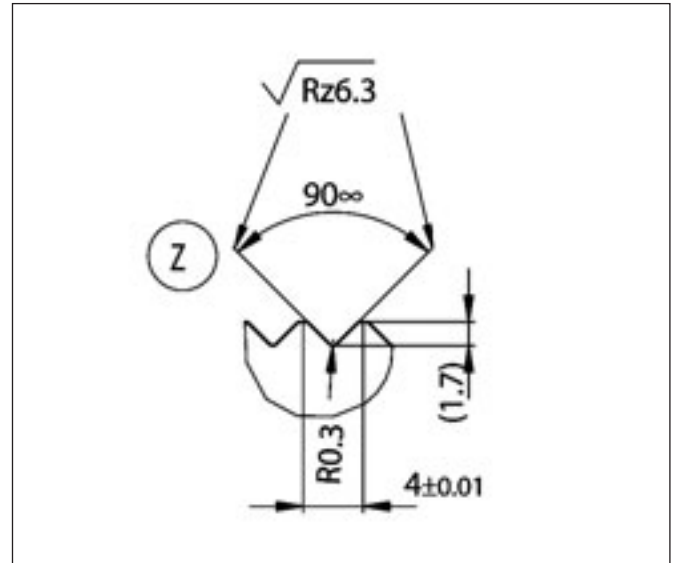
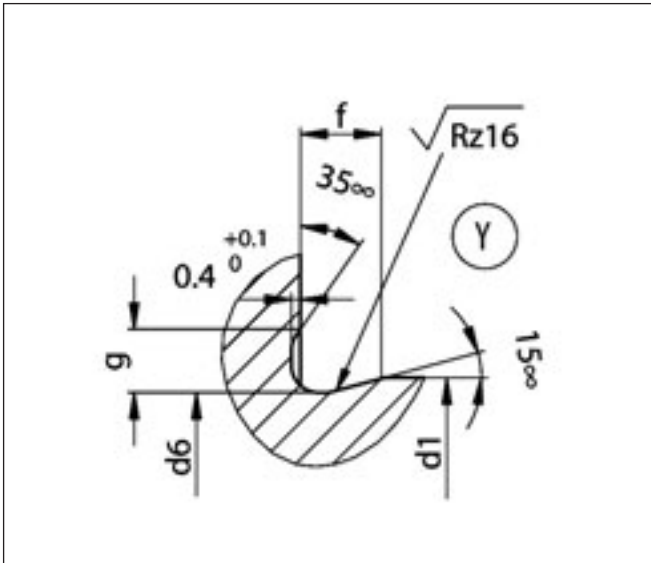




Technische Hinweise



DIN 69880



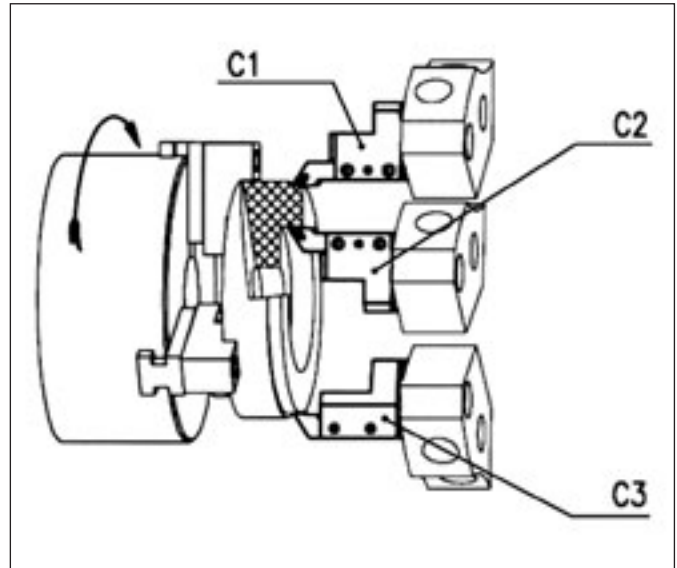
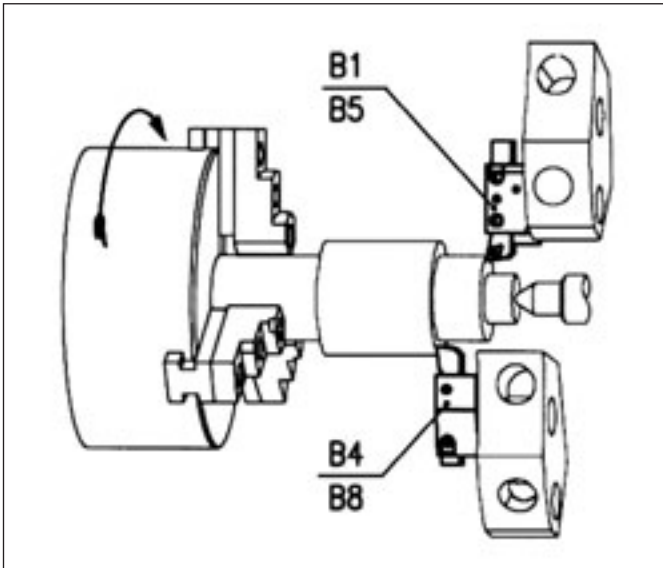
d1 h6	l1 ± 0,3	d2	d3	d6 - 0,1	f	g	h1 max.	h2 ± 0,1	h3 ± 0,1	l2 ± 0,05	l3 min.	l4 + 1	l7	r1 ± 0,02
16	32	8 H6	40	15,4	2,0	1,7	12	15,0	16,92	12,7	16	2	3,5	14,5
20	40	10 H6	50	19,1	2,4	2,0	16	18,0	19,92	21,7	24	2	7,0	18,0
25	48	10 H6	58	24,1	2,4	2,0	16	23,5	25,42	21,7	24	2	7,0	21,0
30	55	14 H8	68	29,1	2,4	2,0	20	27,0	28,92	29,7	40	2	7,0	25,0
40	63	14 H8	83	38,7	3,7	2,8	25	36,0	37,92	29,7	40	3	7,0	32,0
50	78	16 H8	98	48,7	3,7	2,8	32	45,0	46,92	35,7	48	3	8,0	37,0
60	94	16 H8	123	58,7	4,3	3,7	32	55,0	56,92	43,7	56	4	10,0	48,0
80	124	20 H8	158	78,7	4,3	3,7	40	72,0	73,92	59,7	80	4	10,0	65,0

VDI-Werkzeughalter ab Seite 1/340.

Anwendung von VDI-Werkzeughaltern mit Rechtslauf



DIN 69880



Anwendung von VDI-Werkzeughaltern mit Linkslauf



DIN 69880

