



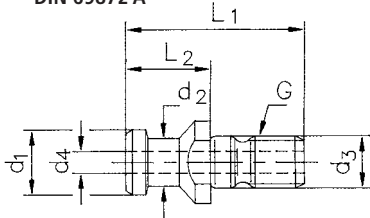
Anzugbolzen

**forum**

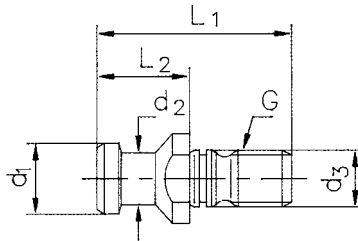
Abmessungen mm						Grad	G	M	passend für Steilkegel	DIN
d <sub>1</sub>	d <sub>2</sub>	d <sub>3</sub>	d <sub>4</sub>	L <sub>1</sub>	L <sub>2</sub>					
19	14	17	7	54	26	15°	M 16	–	SK 40	69872 A
28	21	25	11,5	74	34	15°	M 24	–	SK 50	69872 A
19	14	17	7	54	26	15°	M 16	–	SK 40	69872 B abgedichtet
28	21	25	11,5	74	34	15°	M 24	–	SK 50	69872 B abgedichtet
18,95	12,95	17	7,3	44,5	16,4	45°	M 16	–	SK 40	ISO 7388 II B
29,1	19,6	25	11,5	65,5	25,55	45°	M 24	–	SK 50	ISO 7388 II B
15	10	17	–	60	35	45°	M 16	–	SK 40	JIS B 6339 45°
15	10	17	–	60	35	60°	M 16	–	SK 40	JIS B 6339 60°
15	10	17	–	60	35	90°	M 16	–	SK 40	JIS B 6339 90°
25	21,1	17	–	53	25	–	M 16	–	SK 40	Ott Ringnut mit Innenbohrung
25	21,1	17	–	53	25	–	M 16	16	SK 40	Ott Ringnut mit Innengewinde M 16
S 20x2	–	17	–	58	30	–	M 16	–	SK 40	Deckel

Anzugbolzen Seite 1/391.

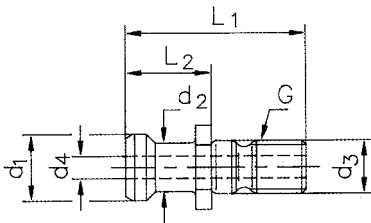
DIN 69872 A



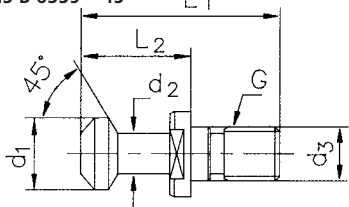
DIN 69872 B



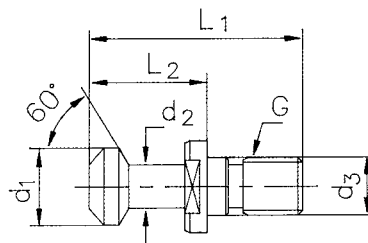
ISO 7388 II B



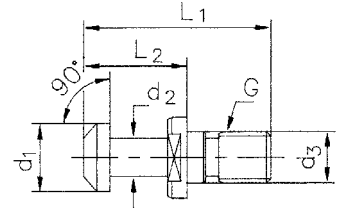
JIS B 6339 – 45°



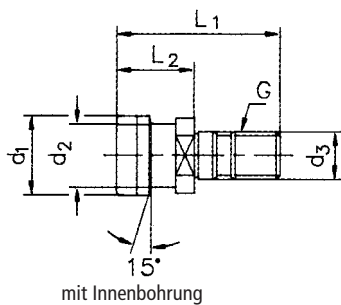
JIS B 6339 – 60°



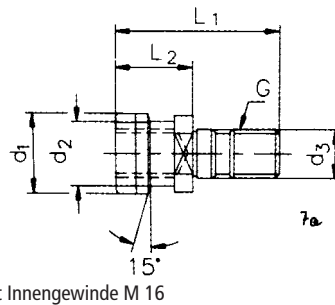
JIS B 6339 – 90°



Ott Ringnut



Ott Ringnut



Deckel S 20x2

